

SEPARATION MAGNETS



FREE
FLOW



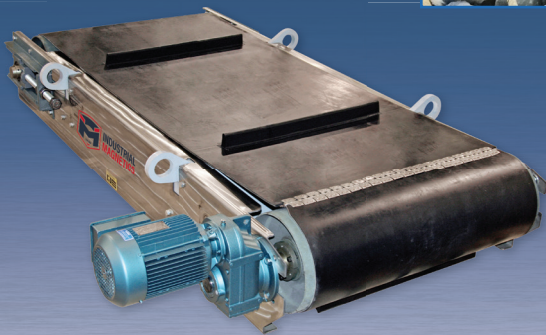
LIQUID



OVER
THE
BELT



PNEUMATIC
FLOW



SEPARATION MAGNETS FOR PRODUCT
PURIFICATION AND EQUIPMENT PROTECTION



**INDUSTRIAL
MAGNETICS®**

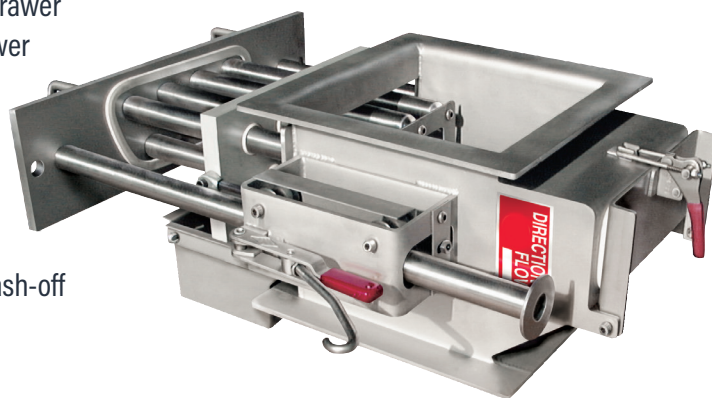
**MAKING THINGS
BETTER**

DRAWER-IN-HOUSINGS FAMILY

DRAWER-IN-HOUSING (DIH) ■■

Drawer-In-Housings contain one or more rows of magnetic tubes to capture ferrous metal particles. Magnetic tubes consist of Ceramic or Rare Earth circuits encased in Stainless Steel. Two-row housings have tubes on alternating centers from one row to another, to force a zig-zag or cascading material flow over as many tubes as possible to achieve the best metal separation. Standard Drawer-In-Housings are designed for dry, free flowing product streams. If your product has a tendency to bridge or clog, talk to an IMI sales rep for one of our many solutions for difficult flowing product.

- » Designed for ferrous metal separation in dry processing systems
- » Separation is achieved with magnetic tubes assembled in a drawer
- » Tubes are aligned on alternating centers for multiple row drawer configurations forcing the product flow in a zig-zag pattern while contacting the magnetic tubes
- » The cascade effect ensures maximum tramp metal separation by causing product to have repeated and intimate contact with the magnetic tubes
- » Tubes should be cleaned regularly to prevent build-up and wash-off of collected metal



DIH EZ Clean

SimpleClean™ Manual Drawer-In-Housings ■■

The SimpleClean™ Manual Drawer-In-Housing is an economical solution for applications with low levels of tramp metal contamination. The flanged housing comes with two or more banks of magnetic grate tube assemblies on alternating centers. Each tube is designed with a non-magnetic area located outside of the product stream for substantially easier cleaning/removal of tramp metal than traditional "manual clean" models on the market.



DRAWER-IN-HOUSINGS FAMILY

EZ-CLEAN DRAWER-IN-HOUSINGS

The EZ-Clean design speeds up and simplifies the cleaning process, making frequent cleaning requirements user-friendly. To clean the tubes, the operator pulls two handles on the front of the housing which slides the magnetic drawer out of the product flow. As the drawer is pulled out, the tubes pass through seals which wipe off accumulated metal into a catch pan located under the wiper seal plate for proper disposal.



Self-Cleaning Drawer-In-Housings

IMI's Self-Cleaning Housings are ideal for remote magnet installation locations, applications requiring frequent cleaning and fully automated processing systems. The cleaning process is solenoid activated and can be controlled from a remote location with the flip of a switch. The cleaning cycle is completed in a matter of seconds. The air-actuated stripper seal assembly discharges collected tramp metal into a catch pan as the drawer opens.



Continuous-Cleaning Drawer-In-Housings

IMI's Continuous-Clean Housings are ideal for remote magnet installation locations, applications requiring frequent cleaning and fully automated processing systems. The patented design and cleaning process (U.S. PATENT NO. 8,132,674) is continuous and does not require the product flow to be stopped. The cleaning cycle is completed in a matter of seconds. The air-actuated stripper seal assembly discharges collected tramp metal into a leak-proof enclosure with a discharge chute that ensures clean operation and isolation of possible hazardous materials.



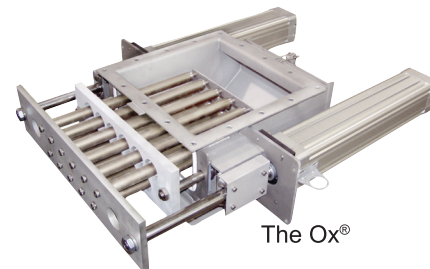
DRAWER-IN-HOUSINGS FAMILY



THE OX® DRAWER-IN-HOUSING ■■

Stainless Steel Construction similar to our other Drawer-In-Housings, the Ox® contains coated tubes, powerful compression springs and special wiper seals to virtually eliminate sticking, galling, static buildup and corrosion on the tubes.

- » Powerful 52 MgOe Rare Earth Circuit - The strongest in the industry!
- » Hydex® Wiper Seals - Ideal for removing sticky product residue
- » Nedox® coated tubes standard (See page 4, "Finishes and Protective Coatings")
- » Compression Spring Assisted Seal Plate
- » Food Grade EPDM Gasket Material - for leak resistant operation

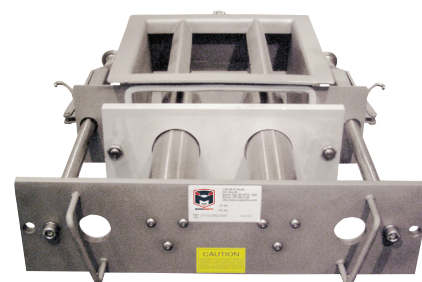


The Ox®

LARGE TUBE HOUSING™ (LTH) ■■

The LTH Drawer-In-Housing works extremely well for applications that have a tendency to bridge or plug a standard Drawer-In-Housing. Large 3" diameter tubes allow enough room for high volume product flows while capturing ferrous metal. The LTH is ideal for flour, powdered sugar or moist products.

- » Powerful 52 MgOe Rare Earth Circuit
- » BUNA Wiper Seals -for removing collected metal
- » Compression Spring Assisted Seal Plate
- » Stainless Steel Construction
- » Food Grade EPDM Gasket Material - for leak resistant operation



Large Tube Housing™

THE ROTODRAWER™ DRAWER-IN-HOUSING

Rotary Style Drawer-In-Housing Magnet to rid ferrous metal from powder & bulk processed products that have a tendency to bridge, choke and require a high degree of product purity. It features a motorized, cylindrical configuration of magnetic tubes that continually rotate through a gravity fed product stream. The rotational design of the magnet, along with our unique splitter bars, serve to break up any clumps of product and allow for easy flow through the magnetic housing while capturing any ferrous metal contamination and purifying the product.

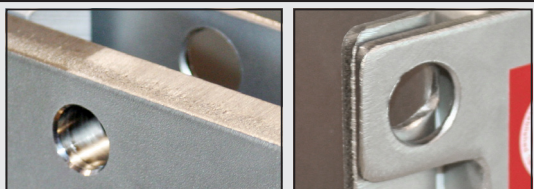
- » Powerful 52 MgOe Rare Earth Circuit - The strongest in the industry!
- » SimpleClean™ & Self-Cleaning models standard (EZ-Clean available)
- » Standard sizes range from 8"x8" to 18"x18" with custom designs available



Rotodrawer™
Shown with Custom Motor and
Optional Push-button controls

Pictured:

Examples of the Drawer and the
Rear Access Door Lock-Out



The IMI magnets identified with ■ are certified by HACCP International as fully conforming to HACCP International's Food Safety Standard.

The IMI separation magnets identified with ■ have been accepted by the United States Department of Agriculture.

Find Drawer-In-Housings Online And Download Technical Sheets At...

<http://www.magnetics.com/tg/housings.asp>

Download Or Drawer-In-Housing Request Tech Sheets

The Round Drawer-In-Housing

Our Round Drawer-In-Housing magnetic separators are designed for ferrous metal separation in processing systems. The Round Drawer-In-Housing Series is an in-stream magnet for dry, free flowing powders and granular products. Ideal for markets such as food, feed, grain and plastics, separation is achieved with magnetic tubes assembled in a drawer configuration.

- » Powerful 52 MgOe Rare Earth Circuit
- The strongest in the industry!
- » SimpleClean™ standard
- » Standard size options are 4", 6", and 8"
- » Offered in 1-row and 2-row configurations as standard
- » Tri-Clover inlet and outlet connections as standard

Other Options:

- » Inlet and outlet custom connection types available
- » Ideal for round pipe/tube chutes where traditional square/rectangle drawer style magnets won't fit due to low headroom



THE SLIM™ SERIES

The SLIM™ Series of Spout Line Inspection Magnets offer single or multiple inspection points in spout lines, with the easy installation of our flanged unit. The magnet is mounted to a clamped door plate assembly and is always in the product flow. To inspect for any ferrous or weakly magnetic stainless contaminants, the operator simply needs to unclamp and extract the assembly to perform a visual check. The SLIM series is intended to be used in conjunction with a comprehensive foreign contamination program and should be strategically placed at several locations throughout the process stream, such as: discharge points of mixers, sifters, screws, etc., anywhere that product drops into a gravity spout.

- » Available in (4) line sizes: SLIM105 (105mm O.D), SLIM120 (120mm O.D), SLIM150 (150mm O.D) and SLIM200 (200mm O.D)
- » OAH: 190mm
- » Inspection Opening: 105mm
- » 52 Grade Rare Earth Opti-B™ balanced magnetic tube design



Gravity Feed Applications – Magnets Inside Of The Product Stream

DRAWER-IN-HOUSING FAMILY OPTIONS

PROTECTIVE COATINGS

IMI offers a variety of product coatings and finishes for tramp metal separation products, including Hydex® wiper seals for removing sticky product residue, Nedox® coated tubes to protect against abrasive materials and to prevent build-up and galling and MAGnanoSHIELD® that offers 99.9999% microbe resistance to assorted bacteria and fungus strains.



FINISHES

The standard finish for Drawer-In-Housings is Customary Grade. This finish features external seam welded construction with all welds free of slag, soot, spatter and burn marks. Housings are bead blasted inside and out for a clean flat finish. Food Grade and Sanitary Grade finishes are also available.



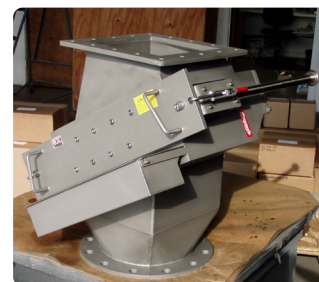
MULTIPLE DRAWER UNITS

Drawer-In-Housings can be constructed with multiple drawers of magnetic tubes. Multiple drawers can be used to clean one bank of tubes at a time without stopping production while still offering magnetic protection. EZ-Clean units are sometimes configured with multiple drawers to reduce the pulling force required to clean the tubes on larger models.

Continuous Clean
We design to match your application requirements

CUSTOM TRANSITIONS AND FLANGES

Custom transitions and flanges are the two most common modifications specified for IMI's housings. Transitions allow for direct fit and easy installation into existing chutes and pipelines. IMI can provide inlet and outlet transitions for round to square, rectangular to square, angled chutes and more. Flanges are custom fabricated for specified mounting and coupling requirements.



ENGINEERED HOUSINGS FOR SPECIAL APPLICATIONS

At IMI, we specialize in providing customer-driven solutions by designing and building a wide variety of custom housings and separators. Some of our unique solutions include angled wall Self-Cleaning Housings and custom fabricated hoppers with EZ-Clean Drawer-In-Housing assemblies built right into the base. No matter what your needs, we welcome the challenge of creating the solution that works best for you.

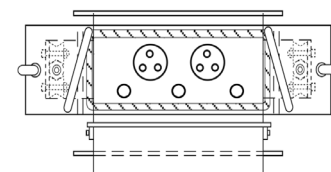


SEALED CLEANING ZONES FOR ON-THE-FLY OPERATION

Sealed cleaning zones can be provided to allow for drawer operation during production. These sealed cleaning zones are also used to isolate hazardous materials from entering the air during the cleaning cycle.

COMBINATION OF LARGE AND SMALLER MAGNETIC TUBES

For applications that have poor flowing product characteristic like poultry or other animal meal, combined with limited head room and where purification of product is very important, use a 3" diameter magnetic tube separator with a second row of protection. The second row consists of 1" diameter magnetic tubes that are generally centered below the open spaces of the 3" diameter tubes above.



DUST HOOD GUARD

Pictured to the right is our Self-Cleaning Housing with enclosed "Dust Hood" Guard. This magnet includes valves that are opened during the magnet's cleaning cycle, assisting the plant dust control system to capture nuisance dusting that occurs, as the magnet is opened. This feature assists in housekeeping as it keeps dust off the floor and adjoining equipment.



Gravity Feed Applications – Magnets Inside Of The Product Stream

GRATE TUBES & GRATE TUBE ASSEMBLIES



MAGNETIC GRATE TUBES

Ideal for custom installations that require magnetic separation, but lack space for a housing or grate assembly. Tapped mounting holes in each end of the tube allow for easy bolt-in installation. Customers can arrange these tubes in a configuration that works best for their needs. Constructed from stainless steel, tubes are available in our Customary Grade finish, Food Grade & Sanitary Grade finishes.



Welded Ends

Grate Tubes

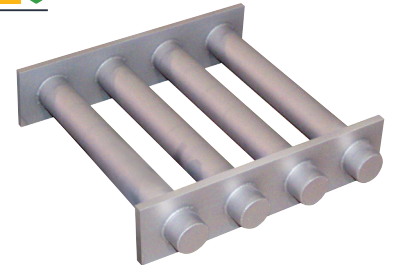
Rolled Ends

MAGNET MATERIALS FOR GRATE TUBES AND GRATE ASSEMBLIES

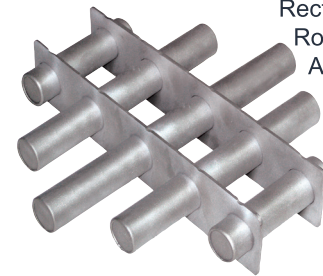
Ceramic: For small to large ferrous particle separation (nails, bolts, washers, etc.)

Rare Earth UHI-52™ (52 MgOe Circuit): Extremely powerful magnet material is used for "fine particle" separation such as metal filings, shavings, metal wear residue, work hardened stainless steel, etc.

Alnico (Custom Designs): High heat applications up to 800°F. Particle size and separation performance is the same as Ceramic.



Rectangular & Round Grate Assemblies



Find Magnetic Grates & Tubes Online And Download Technical Sheets At...
<http://www.magnetics.com/tg/grates.asp> Download Or Request Grate Tube Tech Sheet

LIQUID LINE Applications – Magnets Inside & OUTSIDE Of The Product Stream

LIQUID LINE T-TRAPS

IMI's T-Traps remove unwanted ferrous and work-hardened stainless contaminants from processing lines. They capture fine ferrous particles that are created by wear of upstream processing equipment. T-Traps are typically placed in front of pumps, screens and mills to protect vital plant equipment from costly metal damage and system downtime. IMI's standard T-Traps are designed for line pressures up to 200 psi (13.8 bar) and can operate at temperatures up to 290°F (143°C).

- » USDA Approved, 316 stainless steel sanitary construction
- » Powerful Rare Earth Magnetic Circuit
- » Standard line sizes from 1 1/2" - 6" (other sizes available)
- » Inlet/Outlet ferrules for clamping (Tri-Ciamp and weld ends are standard)
- » Quick clamp system on magnetic filter cap
- » EPDM Standard Gasket Material (BUNA-N & VITON available)
- » Designed for line pressures up to 200 psi
- » Standard maximum operating temperatures of 220°F
- » Optional Strainer Basket on Large Tube

Find T-Traps Online And Download Technical Sheets At...
<http://www.magnetics.com/tg/liquid.asp>
Download Or Request Liquid Line Tech Sheet



Tube Style T-Trap

T-Trap with Strainer Basket



Plate Style T-Trap





PNEUMATIC LINE MAGNETS

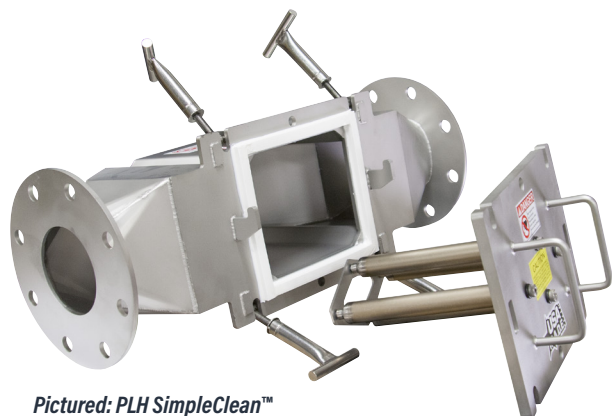
PNEUMATIC LINE HOUSING ■ ■

Incorporates a series of UHI-52™ MgOe Rare Earth tubes on staggered centers. This ensures all product flowing through will make repeated contact with the magnets. The resulting capture rate of ferrous and weakly magnetic stainless contaminants far exceeds any other magnetic separator available for this type of application. Suitable for processing dry, powder, and granular materials.

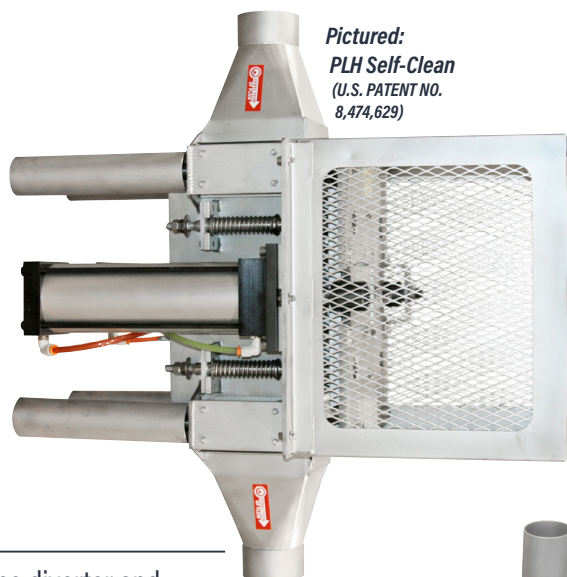
- » SimpleClean™, EZ-Clean & Self-Clean (U.S. PAT. NO. 8,474,629) Models available
- » Food Grade Finish Standard
- » Ideal for dilute-phase pneumatic systems operating up to 15 psi
- » Nedox® coated tubes standard (See page 4, "Finishes and Protective Coatings")
- » Use ahead of processing equipment and bulk load outs to assure product purity and protect machinery from tramp metal damage



Pneumatic Line Housing (EZ-Clean Shown)



Pictured: PLH SimpleClean™ with custom flanges and mounting design

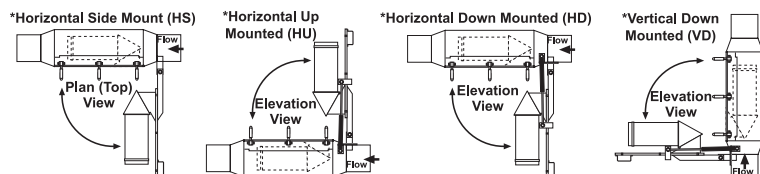
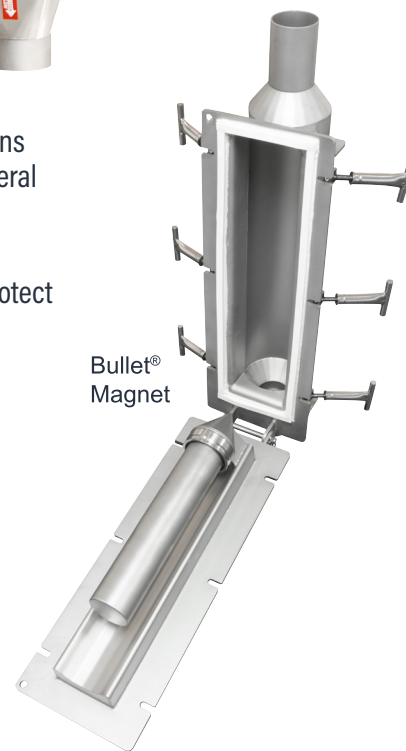


Pictured: PLH Self-Clean (U.S. PATENT NO. 8,474,629)

BULLET® MAGNETS ■ ■

Bullet magnets have a solid, aerodynamic, stainless steel nose cone diverter and magnet assembly that is designed to maintain a balanced flow through the housing, maintaining uniform velocity in line flow. Ideal for dilute phase systems, typical applications include: processing of powders, flour, chemical, resin, food stuff, pharmaceutical and mineral materials.

- » Can be installed in pneumatic line systems operating up to 15 psi
- » Use ahead of processing equipment and bulk load outs to assure product purity and protect machinery from tramp metal damage
- » Helps extend the life of filters and screens
- » Cart mounted models available for truck and rail car bulk unloading



Find Pneumatic Line Magnets Online And Download Technical Sheets At...

<http://www.magnetics.com/tg/pneumatic.asp>

Download Or Request Pneumatic Tech Sheet

PNEUMATIC LINE MAGNETS

4JIT MAGNET

Ideal for vacuum or pneumatic unloading systems for handling pelletized products, plastic resins and granulars from bins, boxes, hoppers and gaylords. The Vacuum 4JIT magnet captures ferrous metal contaminants. The powerful Rare Earth magnet cartridge provides optimum equipment protection and improved product purity without restricting product flow. Available from 1-1/2" to 2-1/2" line sizes.



EXPOSED POLE TUBE MAGNETS

Used ahead of processing equipment and bulk load-outs to assure product purity and to protect machinery from tramp metal damage. Also used when conveying products that have a high moisture content that tend to plug or where degradation is a concern or products could congeal.

- » Open flow design is ideal for creating separation of product and metal to be captured
- » Can be installed in pneumatic conveying systems up to 15 psi
- » Flat to flat mating flanges reduces product leakage
- » Can be installed vertically or horizontally



Exposed Pole Tube

Dual EP Tube Magnet

The Dual EP Tube Magnet has an extremely strong magnetic separation strength combined with a straight through-flow design. This magnet contains two separate magnets mounted opposite of each other outside of the product flow, eliminating wear points when conveying abrasive material. Both doors open to fully expose the magnets making it easier for the operator to clean and remove the captured metal. The straight-through pipe design provides long unit life as any transitions in the pipe would create other wear points for the abrasive product.

Pneumatic Line Magnet on a cart

Most of our Pneumatic Conveying Line Magnets are available on a heavy-duty cart. The industrial grade cart is equipped with pneumatic tires for easy movement. Ideal for applications in which one magnet will be used at multiple locations, such as unloading bulk trucks to storage tank.



Find Pneumatic Line Magnets Online And Download Technical Sheets At...

<http://www.magnetics.com/tg/pneumatic.asp>

Download Or Request Pneumatic Tech Sheet

*Pictured:
Example of the Door
Lock-Out*



PLATE MAGNETS

PLATE MAGNETS

Designed to capture ferrous metal in conveyed or gravity flow applications to improve product purity and protect processing equipment from damage. They are available in Ceramic or Rare Earth and EZ-Clean or Self-Clean designs to fit your strength & maintenance demands.

Above the Flow Applications:

Flush Face (FF) and Single Product Layer Plate Magnets ■■

Installed above the product flow, these powerful plate magnets have incredible reach-out to attract and capture ferrous metal as it passes underneath.

Below the Flow Applications:

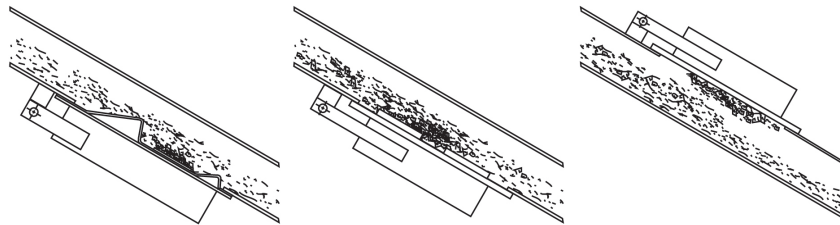
Exposed Pole (EP) and Spout Magnet ■■

Since the product flows directly over the magnetic face, these plate magnets provide intimate contact with metal contaminants, while also reaching-out through the entire product burden. Both styles have design features to keep captured metal from washing off in the ensuing product stream.

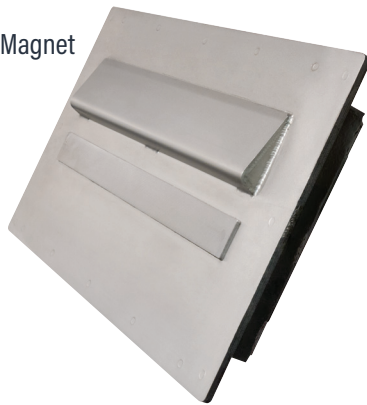
Find Plate Magnets Online And Download Technical Sheets At...

<http://www.magnetics.com/tg/plates.asp>

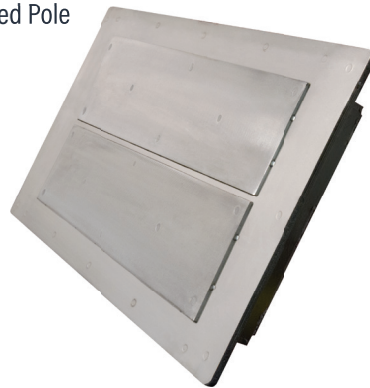
Download Or Request Plate Magnet Tech Sheet



Spout Magnet



Exposed Pole



Flush Face



Single Product Layer
Plate Magnet



Self-Cleaning
Plate Magnet



Gravity Feed Applications – Magnets Outside Of The Product Stream

HUMP MAGNETS (PLATE-IN-CHUTE SEPARATORS)

HUMP MAGNETS

Sometimes referred to as "Dog Leg" magnets, are ideal for high volume gravity flow applications. Hump Magnets take product flows from vertical to 45° angles where two extremely powerful spout style magnets reach in and capture ferrous metal before returning the product flow back to vertical.

IMI Hump Magnets can be engineered with chutes to fit directly into your processing lines. Customer specified inlet and outlet requirements can be accommodated using custom designed housings, transitions (round or rectangular), flanges and more.

EZ-CLEAN AND SELF-CLEANING MAGNETS

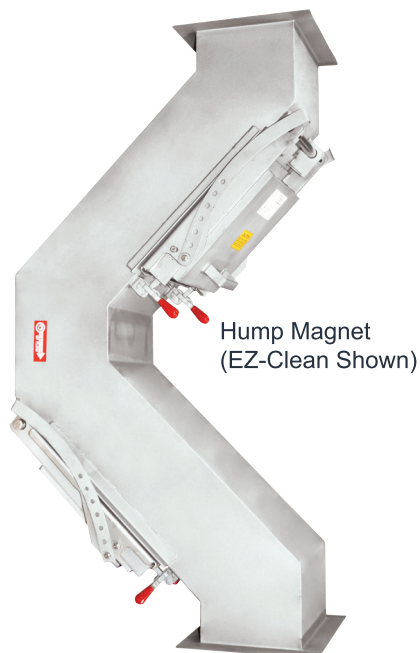
Designed to simplify the cleaning process and to increase processing line efficiency. These cleaning options feature spout faced stripper pans that swing out of the product flow and away from the magnet to release collected metal. The EZ-Clean unit is operated manually by unclamping the magnet and pulling the assembly into the open position. The Self-Cleaning model operates on the same principle but uses either pneumatic cylinders or electric actuators to open and close the plate magnet.

- » All stainless steel construction
- » Ceramic or Rare Earth Magnets
- » Features Leak resistant seals & DE-STA-CO clamps for a positive sealing
- » EZ-Clean, Self-Cleaning (Air or Electric Actuated)
- » Custom mounting flanges, inlets and outlets are available
- » Abrasive resistant product contact surfaces

Find Hump Magnets Online And Download Technical Sheets At...

<http://www.magnetics.com/tg/hump.asp>

Download Or Request Hump Magnet Tech Sheet



Gravity Feed Applications – Magnets Outside Of The Product Stream

DRUM SEPARATORS

DRUM SEPARATORS

Provide continuous ferrous metal removal from dry, free-flowing processing systems and self-cleans in the process. Utilizing a stainless steel rotating drum around a stationary permanent magnet, ferrous metal sticks to the stainless drum due to the magnetic field and is rotated out of the clean product flow. Once the collected metal is out of the product stream, it is passed out of the magnetic field where it is discharged and collected.

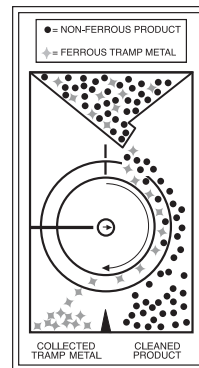
- » Powerful Ceramic or Rare Earth Permanent Magnet Material
- » Large selection of standard sizes with custom designs available
- » Over 180° of Magnetic Arc Protection with Manually adjustable position
- » Custom Inlet and Discharge Mounting Flanges available
- » Fixed diverter to separate cleaned product and collected tramp metal.
- » Flex Seal to Prevent Product from Flowing Around the Backside of the Drum
- » Access Doors for Inspection and Drum Removal
- » Sealed Bearings for Drum Support and Drive
- » Stainless steel drum shaft
- » Special magnetic circuits for reach or holding
- » Stainless steel housings
- » Housings available with special inlet for vibratory feeders
- » Multiple drum assemblies
- » Special voltage motors



Find Drum Separators Online And Download Technical Sheets At...

<http://www.magnetics.com/tg/drum.asp>

Download Or Request Drum Tech Sheet

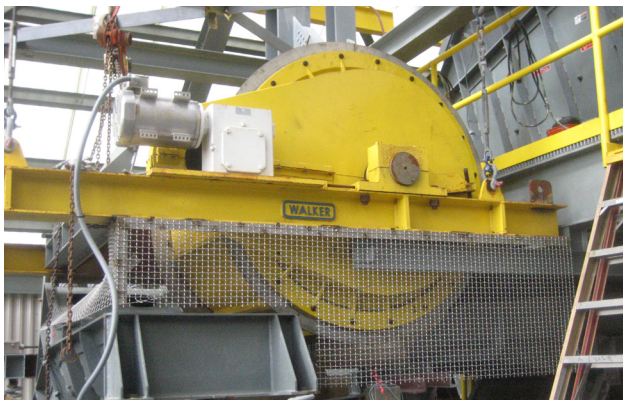


Drum Separator



ELECTROMAGNETIC DRUM SEPARATORS

For auto shredding, municipal solid waste, parts recovery, and iron ore cobbing, drums fitted with electromagnets are the solution. Walker Electromagnetic Drums are available with either axial or radial pole constructions. They can provide control of individual poles or sections of the entire surface, through use of a variable voltage transformer control, if required.



All electromagnets used are wound with Class R insulated wire. They are designed to dissipate concentrated heat without external cooling. All drums are provided with shells of manganese or stainless steel, depending on application. Walker Electromagnetic Drums provide the ultimate in design and performance for heavy duty ferrous separation applications. Available in diameters from 36" to 72" and widths from 36" to 120".

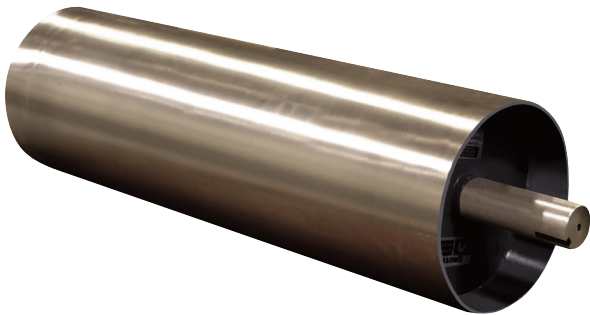
Gravity Feed Applications – Magnets Outside Of The Product Stream

SEPARATION PULLEYS

SEPARATION PULLEYS

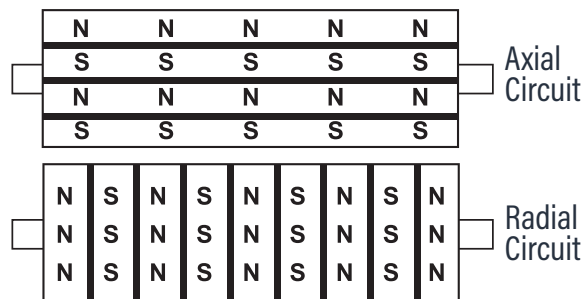
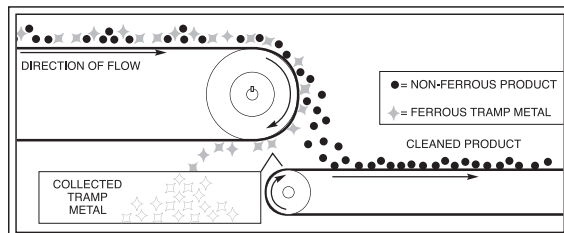
IMI's line of powerful permanent Magnetic Separation Pulleys are typically installed as head pulleys in conveyor system applications. They provide effective, automatic and continuous removal of tramp metal from material flow.

- » Stainless Steel Shell and a Removable Steel Shaft standard
- » Available in Axial and Radial Circuit
- » Straight hub with keyway standard with QD Hubs Optional
- » Axial magnetic circuit design standard and Radial circuits optional
- » Crowned and/or Lagged Face optional
- » Large selection of standard sizes with custom designs available



Pulley w/ Lagging

Magnetic Separation Pulley



Find Separation Pulleys Online And Download Technical Sheets At...

<http://www.magnetics.com/tg/pulleys.asp>

Download Or Request Pulley Tech Sheet

CONVEYOR LINE APPLICATIONS – MAGNETS OVER THE BELT

PERMANENT & ELECTROMAGNET SUSPENDED OVERHEAD SEPARATORS

SUSPENDED MAGNETS

Designed for separation of ferrous metal from a variety of over-the-belt conveyor applications. Proven in industries such as Mining, Aggregate, Recycling, Tire Shredding, Foundry, Wood Chip, Pulp & Paper, Power Generation, Construction and Demolition.

- » Protect vital processing equipment from ferrous metal damage
- » Improve product purity and quality for high volume belt conveyed products
- » Deep reaching magnetic circuits supply superior separation capabilities
- » Use prior to a metal detector to achieve maximum separation
- » Reclaims valuable ferrous metal
- » Reduce product liability

Self-Cleaning Permanent Magnets (SMS)

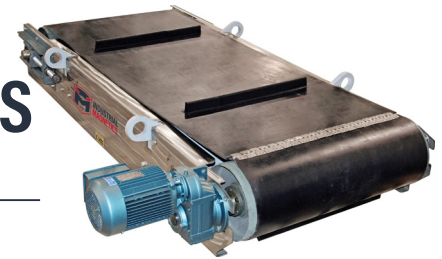
The SMS magnets offer optimum operating efficiency with a continuous cleaning belt to keep the magnet face free of collected metal. The powerful, deep reaching magnetic circuit pulls metal to the face of the magnet where the cleaned belt can remove the metal off the end of the magnet and out of the product flow. The compact design of the SMS makes it ideal for use on portable size reduction equipment.

Suspended Electromagnets (SEMO)

These powerful electromagnets are designed to deliver peak ferrous metal separation performance. The deep reaching magnetic field is ideal for applications that require increased suspension heights for the magnet or that have a deep product burden. Self-Cleaning upgrade packages are available.

Manual Clean Permanent Magnets (SPMC)

These magnets are a good economical solution for applications that require a magnet for equipment protection, but don't encounter enough ferrous metal in their product flow to justify a self-cleaning magnet. Cleaning Options: Swiper Bar, Side Pull Slider in either Manual Pull or Crank.



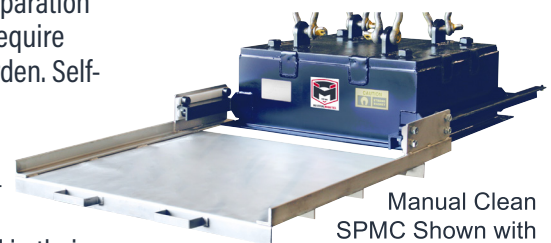
Self-Cleaning Permanent Magnets



Manual Clean Electromagnets



Self-Cleaning Electromagnets

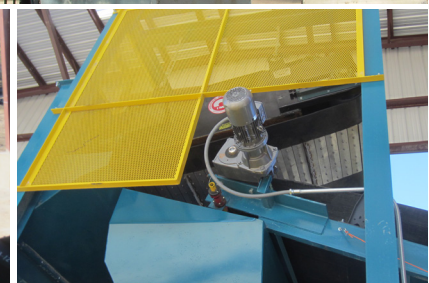


Manual Clean SPMC Shown with Side Pull Slider

Permanent extension magnets discharge collected material further.



Optional protective guards prevent access to pinch points.



Find Suspended Overheads Online And Download Technical Sheets At...

<http://www.magnetics.com/tg/conveyor.asp>

Download Or Request SEMO Tech Sheet

The Ultimate in Recovery™

THE THROW MAKES THE DIFFERENCE™

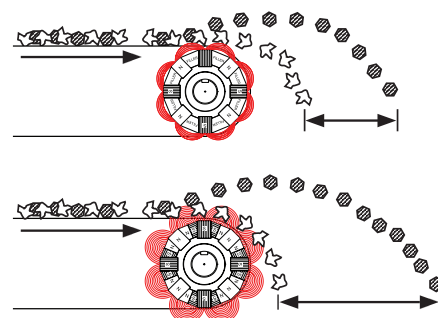
EDDY CURRENT SEPARATORS

Eddy Current Separators are designed from the ground up to provide high recovery rates (97%+) and low operating costs. All of our units do a remarkable job on UBC (Beverage Can) recovery while the 12 and 16 pole units excel in any application where recovery of smaller particles is required such as glass clean up. Eddy Current Separators are ideal for a range of applications, including Material Recovery Facilities, C&D, Incineration, Auto shredding, Electronics Recycling and more.

- » High grade Rare Earth magnets in the Flux Pump Rotor Design™
- » Stainless steel sleeve on all rotors
- » Variable speed motor for rotor and belt
- » Carbon fiber shell minimizes ferrous burnout
- » Internal motorized drive drum for more compact (low profile) design
- » Urethane belt with corrugated sidewalls
- » Take up screw adjustment for easy belt tensioning and tracking
- » Removable side plates for easy access and maintenance
- » Cantilever design for one piece belt change
- » Heavy-duty fold channel construction with lift eyes for easy installation
- » +/- 1% of out throws in your clean aluminum



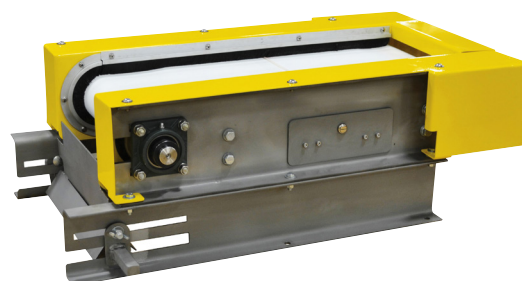
Eddy Current Separator



Javelin™ Magnetic Stainless Separation Conveyor Systems (MSSC)

The High Gauss Stainless Separator would be an excellent addition to your existing Javelin® Eddy Current separator or on its own to compliment your existing equipment.

Our holding magnet was developed to attract and hold stainless steel scrap found in electronic scrap, wire chopping lines and auto shredder residue.



Javelin™ Splitter Boxes

A combination of an adjustable splitter vane and chute to capture the separated process material. Adjustable single and double vane models separate the materials by type and can be rotated into a position that will optimize your recovery.



Find Separation Pulleys Online And Download Technical Sheets At...

<http://www.magnetics.com/tg/conveyor.asp>

Download Or Request Javelin Tech Sheet

R&D LAB AND TEST CENTER

Testing available in our state-of-the-art testing facility. IMI is proud to offer a dedicated technician to assist customers with preventative maintenance, service, regulatory, audit and related requirements of magnetic equipment.

- » Simulate applications in the field and assist in choosing the right magnetic solution.
- » Lab & Testing Features Include:
- » An automated testing system for both pneumatic and gravity-fed bulk materials
- » Industry leading IMI magnetic separators
- » Gauss & pull-testing equipment
- » Parts-per-million testing for ferrous contaminants in bulk material samples
- » Test result report provided with pictures, video and recommendations
- » Testing turn-around in as little as 7 business days

CUSTOMER SUPPORT

- » Preventative Maintenance and Service programs
- » Magnetic equipment audits and testing
- » Engineering, Operations and Sales personnel certified as HACCP Managers



PROGRAMS & SERVICES:



QUICKSHIP®



PRICEMATCH®



**INDUSTRIAL
MAGNETICS**

magnetics.com

1385 S M-75 Boyne City, MI 49712
Tramp Metal Group: 888.582.0821 Fax: 231.582.2704

Did you know of the other IMI affiliated companies?



STERLING®

SYSTEMS & CONTROLS, INC.

Automation ~ Batching ~ Process ~ Systems

1.800.257.7214 • www.sterlingcontrols.com



PRATER®

AIRLOCKS • MILLS • SEPARATORS

1.877.247.5625 • www.praterindustries.com

Distributed By:

Nedox® is a Registered Trademark of General Magnaplate Corp.