



ENGINEERING YOUR SUCCESS.

E-Blast

Accumulator Safety Blocks

For Safety, Compliance & Value

Application:

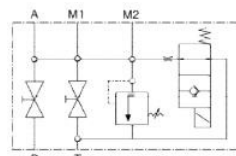
Safety is a number one priority to all but it's especially important when dealing with the power of hydraulics. Hydraulic systems have to not only provide functionality but must also be designed with safety in mind. One focal point of safety in a hydraulic system involves the ability to isolate an accumulator from the rest of the system, limit the pressure the accumulator can hold and allow it to be discharged safely.

Accumulators store energy in the form of compressed gas and are used in hydraulic systems for any number of functions. Due to their nature, accumulators can provide potential energy for the system even when the pump is off. While this ability may be a desired function of the system, it can also be a safety concern in a situation where maintenance is going to be performed on the system.

Also, it's important to note that there are often jurisdictional requirements for the designed safety of a hydraulic system. For example, the European Pressure Equipment Directive (PED) 97/23/EC mandates that a safety device must be fitted to all accumulators to provide shut-off facility, pressure limiting and pressure release functions.

Solution:

Parker's range of SBA safety blocks integrate the functionality to protect, isolate and discharge an accumulator all in one manifold. Properly installed, the shut-off valve can be operated to isolate the accumulator from the system. Once isolated, the accumulator can be discharged to tank via a manual or electronically controlled discharge valve. The accumulator is protected by a PED approved (CE marked) pressure relief valve. SBA safety blocks also include two maintenance ports for easy system diagnostics.



SBA Type E
Manually and Electrically-Operated Discharge
Valves

[Download
Catalogue](#)

Success Factors:

- SBA safety blocks are rated to 350bar (5075 psi).
- SBA safety blocks are available with BSPP or SAE port options
- Three sizes available: NG10, NG20 and NG32
- Buna or fluorocarbon seals
- CE marked relief valves

[visit our site](#)

Customer Values:

- System simplification - one SBA safety block replaces 3 to 4 individual components.
- SBA safety blocks provide system compliance for PED requirement
- Reduced installation costs through elimination of unnecessary plumbing and labour
- Integrated design eliminates several potential leak points

If you have any questions, please contact your Customer Service Representative or Territory Manager.

Parker Canada Division
160 Chisholm Drive
Milton, ON L9T 3G9
Ph: (905)
693-3000



[FORWARD TO
A FRIEND](#)